

Woodhill

Visual Story



Table of Contents

About this visual story	2
General content advisory	2
Show times and details	3

Shoreditch Town Hall

Getting here	4
Arriving	5

Woodhill

The set	7
The characters	9
Detailed content warning	11
After the show	12

About this visual story

This visual story is written to help you prepare for your visit to Shoreditch Town Hall to see the play Woodhill. We're really excited to welcome you.

This resource will help you get to know the venue, details about the show and what you can expect during your visit. You can find more information about the production online [here](#).

You can access the Woodhill pre-show wellbeing pack [here](#).

If you would like any more information or have any questions, then please get in touch at info@lungtheatre.co.uk

General Content Advisory

Content Warnings: Woodhill contains themes including self harm, suicide, addiction, racism, child loss and extreme violence. Contains vivid movement and descriptions that audiences may find distressing and upsetting. Contains strong language and strobe lighting.

Woodhill is a verbatim play about death in prison.

Verbatim means using people's real words. Everything you hear in the play has been said by someone in an interview with LUNG, put into a script, and then recorded by voice actors.

The performers on the stage dance and move to the audio recordings. The entire piece is scored to music.

The play follows 3 central families, who have been meeting with the LUNG team for the last year to make the show with us. We are honoured to be working with them.

Remember, if you're overwhelmed at any time, you can do whatever helps you. You can leave the auditorium temporarily and come back in when you are ready; you can wear noise-cancelling headphones; you can move to a different part of the room; you can play with a fidget toy or gadget. Whatever helps you is ok.

Show Times and Details

To access show dates and times and details please visit Shoreditch Town Hall's website [here](#).

There is a relaxed performance on Saturday 30th September at 5pm. This is a show where we welcome all those with learning disabilities and/or additional sensory and communication needs, or anyone else who prefers to attend performances in a more informal environment. During the show, audience members should feel comfortable making noise and moving around as and when they need to in a friendly environment.

Shoreditch Town Hall: Getting here

Shoreditch Town Hall is located at the following address:

380 Old St,
London,
EC1V 9LT



Travel by tube or train. The nearest underground station is Old Street and the nearest overground station is Shoreditch High Street.



Travel by bus. Buses stopping nearby include the 26, 35, 47, 48, 55, 67, 78, 135, 149, 242 and 243.



Travel by car. The nearest NCP car park is at Finsbury Square.

You can see on Google Maps [here](#). You can find more information about the Shoreditch Town Hall online [here](#).

Shoreditch Town Hall: Arriving

From the outside, Shoreditch Town Hall looks like this:



The entrance hall looks like this:



The theatre is at the end of this corridor in the centre. It is marked on the picture above by a red circle. There will be signs and members of front of house staff to direct you to the auditorium.

Toilets are on this level, before you go into the auditorium.



The auditorium where Woodhill we be performed looks like this:

You can explore a 3D tour of Shoreditch town hall by following the link [here](#).

Woodhill: The set

The Woodhill set is made up of metal shelves, cardboard boxes and 3 hanging light pendants. The shelves are on wheels and move around, and the boxes are taken on and off shelves throughout the performance. The light pendants come on and off and the general lighting stage changes colour throughout.



One of the three pendants that hangs down from the ceiling throughout the performance. They turn on and off and pulsate as audio actors voices come through the speakers.



Woodhill: The Characters



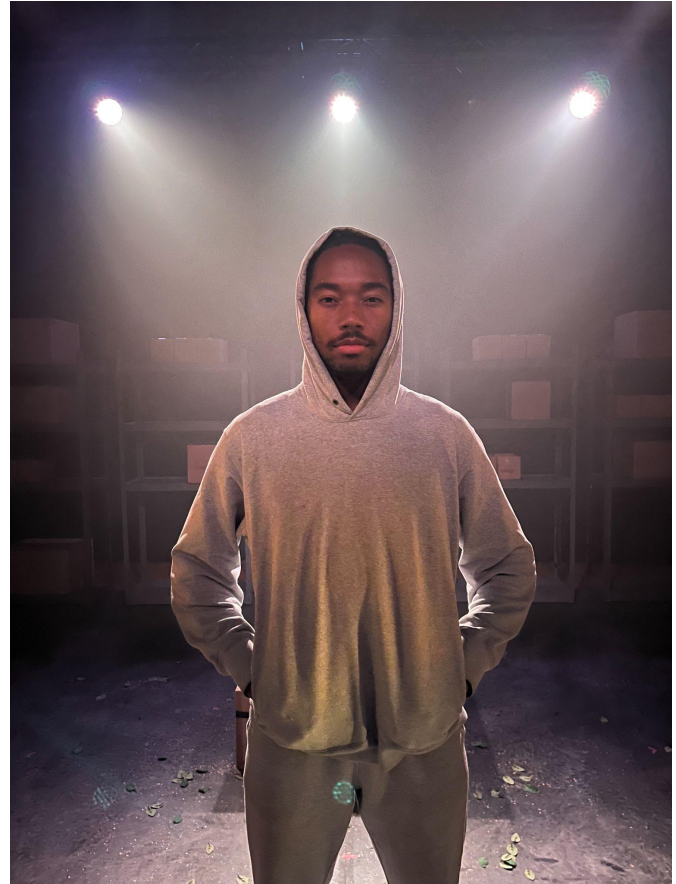
In the left of the image above is the character of Janet. Janet is based on a real person but performed by the actor in the photograph. Janet's son died in Woodhill prison and the play follows her story.

In the centre of the image is the character Carole. Carole is based on a real person but performed by the actor in the photograph. Carole's brother died in Woodhill prison and the play follows her story.

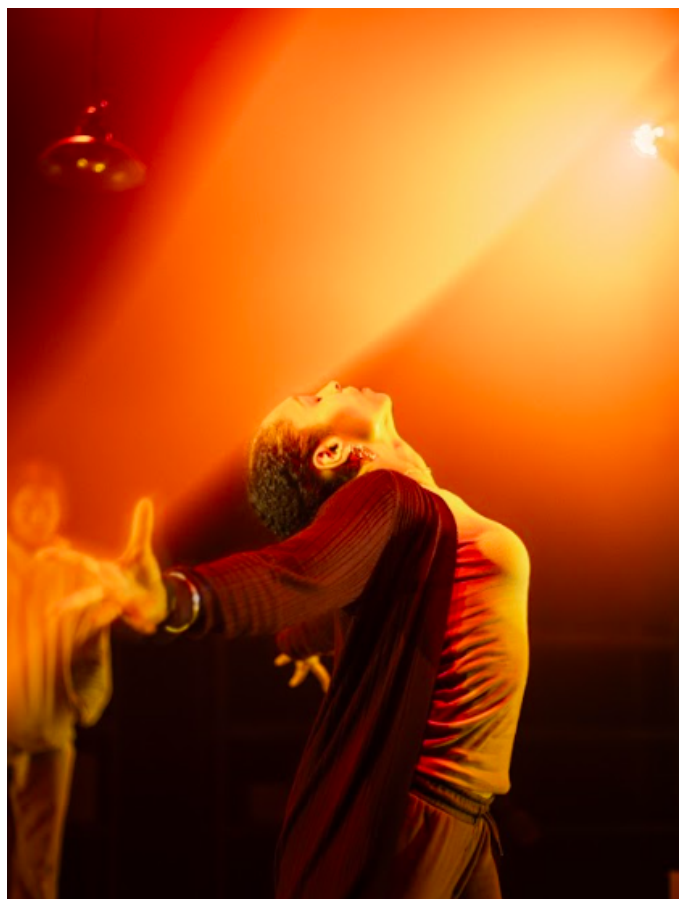
In the right of the image is the character Lee. Lee is based on a real person but performed by the actor in the photograph. Lee's step-brother died in Woodhill prison and the play follows her story.

These three characters did not know each other before they all experienced similar life events. The play tells the story of their lives.

The 4th character on stage is 'Ghost'. This is a character that changes between the ghost of the dead family members of Janet, Carole and Lee. Ghost is performed by the actor in the picture above.



Other characters:
As well as the 4 performers on stage, we hear the voices of other characters through the speakers. When other characters speak, the characters on stage react using movement to their voices. The lights from the 3 hanging pendants flicker.



Woodhill: Detailed Content Warning

The play is emotional and dramatic throughout. Below are some specific points in the play that may be particularly upsetting.

At 40:00: There are detailed descriptions of suicide.

At this moment in the play, Janet, Carole and Lee describe the way their family member died.

Janet's son, Stephen, died by hanging himself in his cell.

Carole's brother Chris took an overdose of drugs.

Lee's step-brother Kevin died by hanging himself using his bedsheet.

At 58:30: There are descriptions of a beheading.

Janet, Carole and Lee describe hearing the news that a man has been beheaded at Woodhill. They describe prison officers watching on as 3 prisoners use blades and a torn cloth to 'get to work' cutting another prisoner's head off.

At 60:00: There are descriptions of infant mortality.

Three audio voices tell the story of a woman who was pregnant in prison and gave birth alone in her cell. She pressed her cell buzzer for help, but nobody came through the night. The voices describe her biting through the umbilical cord and the voice of the mother screams for a nurse.

At 68:00: There are descriptions of the suffocation of a teenager by prison guards. This involves themes of racism and discrimination.

At this moment in the play, audio voices describe the death of a teenager. The teenage boy was restrained by prison staff and told them that he couldn't breathe. They continued to forcefully detain him and he was suffocated. The performers on stage dance to the audio describing the event and the scene builds to an intense climax.

Woodhill: After the Show

After the show front of house staff at Shoreditch Town Hall will be available to speak to, if you have questions or need additional support.

You can access our Woodhill post-show wellbeing pack [here](#).

You can find out more information about the making of the show, and how to support the Woodhill #NoMoreDeaths campaign [here](#).

If you would like to get in touch after the show with members of the LUNG team, you can email info@lungtheatre.co.uk.

Thank you so much for coming to see our play Woodhill. And we hope to see you again in the future.